



## CSM Automotive Production Barometer (APB)

CSM Worldwide, the leading provider of market intelligence and forecasting to the automotive industry, announces the June 2006 CSM Automotive Production Barometer™. Released in advance of existing sources of information, this service provides an accurate record of light vehicle production for the previous month to assist automotive economists and financial analysts in their ongoing industry evaluations.

The CSM Automotive Production Barometer for June 2006 and release schedule is currently available via the CSM Worldwide website: [www.csmauto.com/auto-production-barometer](http://www.csmauto.com/auto-production-barometer).

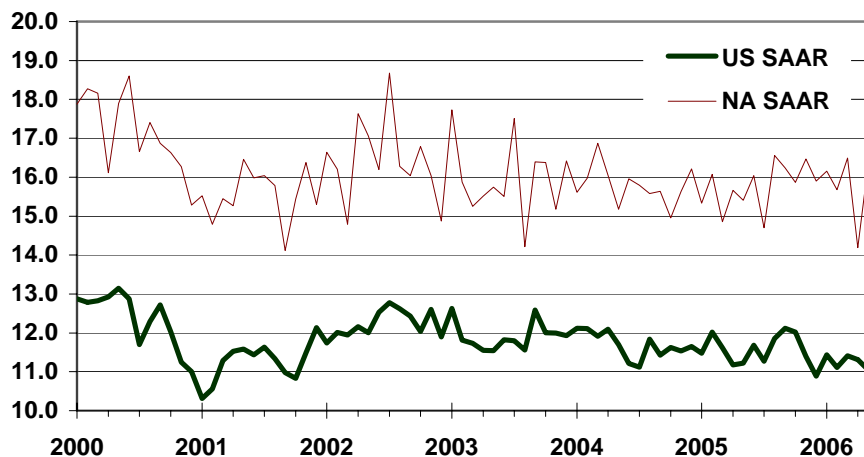
US light vehicle production fell 1.60% in May to a seasonally adjusted 11.04M units versus a year ago. Total US car production was off 0.10% over last year with light truck output down 2.60% from last years levels. Actual unit production in the US totaled over 1.04M units in May, posting a 4.30% increase from May last year. North American production rebounded following a weak April, jumping 6.20% versus May last year to a seasonally adjusted 16.37M units. Year to date, production continues to outpace last year at 15.78M units, 2.10% above last year's pace through May.

Of the "New 6" North American auto manufacturers, only Nissan posted a decline compared to year ago levels, with production down 4.80% in May and down 6.0% year-to-date. Despite the addition of the all-new Versa small car, production is now expected to finish the year below last year's levels. One of the root causes is weakness of Nissan's truck lineup and the transition to the redesigned Altima sedan later this year. While Ford rebounded in May with production up 9.50% over last year, output through May is down 2.80% to 3.31M units on a seasonally adjusted basis. Like Nissan, Ford's fortunes are not expected to change for the positive in 2006 with North American production expected to decline 1.5% to 2.0% for the year to around 3.30M units.

DaimlerChrysler and Honda were big gainers in May, posting increases of 10.90% and 9.10% respectively versus year ago levels while also recording solid 1.90% and 5.10% increases year-to-date. GM posted a 1.70% increase in production in May with Toyota following with a 0.60% increase. Year-to-date, both GM and Toyota's North American output are up 0.90% to 4.62M and 1.62M units respectively. The two automakers paths will diverge in the second half of the year with GM expected to decline 3.0% to 3.50% in 2006 while Toyota is expected to grow about 1.0% this year. GM's weakness is due to lower full-size pickup volume as it prepares to launch the redesigned models in the fourth quarter. Total North American output is expected to end the year at 15.8M units, slightly above last year.

Over the next 12 to 18 months, a significant amount of high volume new and redesigned vehicles will be launched in North America fueling growth in this market. According to CSM Worldwide analyst Joe Langley, "This increased level of activity will fuel even greater market pressures within core vehicle segments such as the mid-size sedans and full-size pickups while a wide range of new crossovers utilities squeeze traditional segments. In 2007, new or redesigned vehicles will account for nearly 20% or over three million units of total North American output." This wave of new vehicle activity is well dispersed across all the major manufacturers in the region and across vehicle segments.

## CSM Automotive Production Barometer (US and NA SAAR, units in millions)



- US light vehicle production in May declined 1.60% versus last year to 11.26M unit SAAR.
- Year-to-date US light vehicle output is down 2.10% on an adjusted basis.
- US light vehicle production increased 4.30% compared to a year ago to a NSA 1.04M units in May.
- NA light vehicle production increased 6.2% over last year to 16.37M units on a SAAR basis.

Light Vehicle Production (units in millions)	Mar-06	Apr-06	May-06	YTD	2005	2004
US Total (SAAR)	11.41	11.32	11.04	11.26	11.59	11.71
Autos	4.35	4.28	4.10	4.30	4.26	4.18
Light Trucks	7.06	7.04	6.94	6.96	7.33	7.53
US (NSA)	1.13	0.88	1.04	4.90	11.57	11.64
North America (SAAR)	16.40	14.14	16.37	15.78	15.79	15.78

Light Vehicle Production (Y/Y %)	Mar-06	Apr-06	May-06	YTD	2005	2004
US Total (SAAR)	-1.80%	1.30%	-1.60%	-2.10%	-1.10%	-1.70%
Autos	1.50%	4.30%	-0.10%	1.60%	1.70%	-6.00%
Light Trucks	-3.80%	-0.40%	-2.60%	-4.20%	-2.70%	0.90%
US (NSA)	7.50%	-13.30%	4.30%	-1.80%	-0.60%	-1.90%
North America (SAAR)	11.00%	-10.60%	6.20%	2.10%	0.00%	-0.70%

### North American Light Vehicle Production by Manufacturer

Light Vehicle Production (units in millions)	Mar-06	Apr-06	May-06	YTD	2005	2004
GM (SAAR, inc. HUMMER, CAMI) - GM	4.82	4.02	4.60	4.62	4.72	5.11
Ford (SAAR, inc. Mazda) - F	3.44	3.00	3.60	3.31	3.38	3.61
DaimlerChrysler (SAAR, inc. M-B) - DCX	2.97	2.53	2.96	2.77	2.79	2.67
Toyota (SAAR, inc. NUMMI) - TM	1.67	1.54	1.62	1.62	1.62	1.51
Honda (SAAR) - HMC	1.38	1.31	1.44	1.37	1.35	1.22
Nissan (SAAR, inc. Renault) - NSANY	1.27	1.00	1.14	1.15	1.20	1.07

Light Vehicle Production (Y/Y %)	Mar-06	Apr-06	May-06	YTD	2005	2004
GM (SAAR, inc. HUMMER, CAMI) - GM	12.70%	-17.40%	1.70%	0.90%	-7.50%	-4.10%
Ford (SAAR, inc. Mazda) - F	5.20%	-11.70%	9.50%	-2.80%	-6.30%	-5.00%
DaimlerChrysler (SAAR, inc. M-B) - DCX	12.20%	-10.90%	10.90%	1.90%	4.50%	3.90%
Toyota (SAAR, inc. NUMMI) - TM	4.80%	-6.20%	0.60%	0.90%	7.10%	12.10%
Honda (SAAR) - HMC	5.50%	-1.00%	9.10%	5.10%	10.80%	-3.30%
Nissan (SAAR, inc. Renault) - NSANY	-0.20%	-15.10%	-4.80%	-6.00%	11.50%	29.60%