

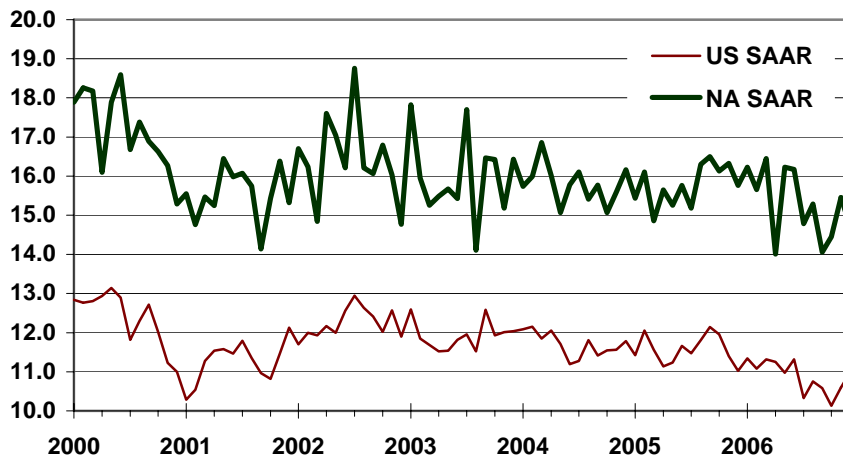


CSM Automotive Production Barometer (APB)

CSM Worldwide, the leading provider of market intelligence and forecasting to the automotive industry, announces the January 2007 CSM Automotive Production Barometer™. Released in advance of existing sources of information, this service provides an accurate record of light vehicle production for the previous month to assist automotive economists and financial analysts in their ongoing industry evaluations.

- US light vehicle production in December 2006 increased 0.30% over year ago levels to 11.0 million units on a SAAR basis and rebounding to their highest levels since June.
- Total US light vehicle output in 2006 fell 5.90% to 10.90 million units on a SAAR basis.
- December 2006 North American light vehicle production increased 6.60% from year ago levels.
- North American light vehicle production in 2006 fell 3.00% to 15.31 million units on an adjusted basis, the lowest level since 1996 on weakness at the Traditional Big 3 manufacturers.

CSM Automotive Production Barometer (US and NA SAAR, units in millions)



- First half of 2006 averaged 15.79 million units with second half average plummeting 1 million ones.
- Volatile fuel prices impacted vehicle demand in second half for pickups trucks and SUVs.
- Excessive incentive spending at Ford and Chrysler Group warranted significant production cuts in 3Q 2006.
- Incremental production gains offset cuts at Traditional Big 3 automakers.

Light Vehicle Production (units in millions)	Oct-06	Nov-06	Dec-06	2006	2005	2004
US Total (SAAR)	10.13	10.59	11.00	10.90	11.59	11.71
Autos	4.19	4.10	4.23	4.16	4.26	4.16
Light Trucks	5.90	6.50	6.77	6.74	7.32	7.48
US (NSA)	0.94	0.84	0.75	10.86	11.57	11.64
North America (SAAR)	14.45	15.45	14.71	15.31	15.79	15.78

Light Vehicle Production (Y/Y %)	Oct-06	Nov-06	Dec-06	2006	2005	2004
US Total (SAAR)	-15.30%	-7.10%	0.30%	-5.90%	-1.10%	-1.70%
Autos	-3.20%	-6.40%	0.80%	-2.30%	1.70%	-6.00%
Light Trucks	-22.10%	-7.50%	0.10%	-8.00%	-2.70%	0.90%
US (NSA)	-11.30%	-7.30%	6.40%	-6.10%	-0.60%	-1.90%
North America (SAAR)	-10.40%	-5.40%	6.60%	-3.00%	0.00%	-0.70%