

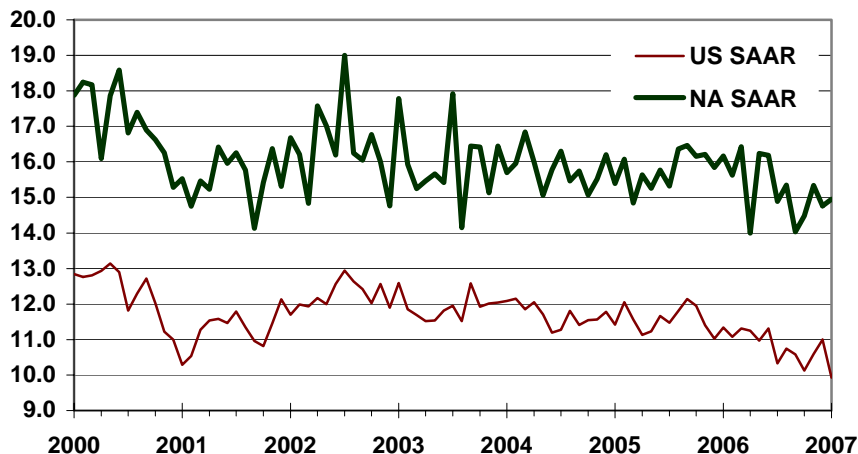


## CSM Automotive Production Barometer (APB)

CSM Worldwide, the leading provider of market intelligence and forecasting to the automotive industry, announces the February 2007 CSM Automotive Production Barometer™. Released in advance of existing sources of information, this service provides an accurate record of light vehicle production for the previous month to assist automotive economists and financial analysts in their ongoing industry evaluations.

- US light vehicle production in January 2007 declined 12.50% over year ago levels to 9.93 million units on a SAAR basis.
- Actual unit output for light vehicles fell 8.10% with 826,000 units produced in January.
- US output posted the lowest production rate since July 1998 during the GM-UAW strike.
- January 2007 North American light vehicle production fell 7.50% from year ago levels to 14.95 million units on a SAAR basis.

## CSM Automotive Production Barometer (US and NA SAAR, units in millions)



- Plant downtime a significant factor in weak production results.
- Full-size trucks continue to be the leading culprit of lower output.
- Goal to reduce incentive spending and inventory levels also driving Traditional Big 3 volume down.
- New Domestic incremental production gains eroded by cuts at Traditional Big 3 automakers.

Light Vehicle Production (units in millions)	Nov-06	Dec-06	Jan-07	YTD	2006	2005
US Total (SAAR)	10.59	11.00	9.93	9.93	10.86	11.57
Autos	4.07	4.23	3.86	3.86	4.14	4.26
Light Trucks	6.53	6.77	6.07	6.07	6.72	7.32
US (NSA)	0.84	0.75	0.83	0.83	10.86	11.57
North America (SAAR)	15.45	14.71	14.95	14.95	15.35	15.79

Light Vehicle Production (Y/Y %)	Nov-06	Dec-06	Jan-07	YTD	2006	2005
US Total (SAAR)	-7.10%	0.30%	-12.50%	-12.50%	-6.10%	-0.60%
Autos	-6.40%	0.80%	-13.40%	-13.40%	-2.60%	2.30%
Light Trucks	-7.10%	0.30%	-11.80%	-11.80%	-8.20%	-2.20%
US (NSA)	-7.30%	6.40%	-8.10%	-8.10%	-6.10%	-0.60%
North America (SAAR)	-5.40%	6.60%	-7.50%	-7.50%	-2.80%	0.10%