

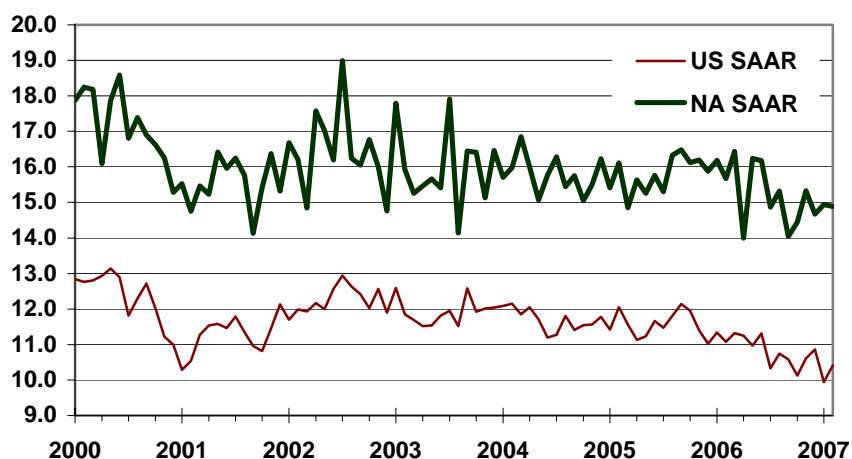


CSM Automotive Production Barometer (APB)

CSM Worldwide, the leading provider of market intelligence and forecasting to the automotive industry, announces the March 2007 CSM Automotive Production Barometer™. Released in advance of existing sources of information, this service provides an accurate record of light vehicle production for the previous month to assist automotive economists and financial analysts in their ongoing industry evaluations.

- US light vehicle production in February 2007 declined 6.10% over year ago levels to 10.41 million units on a SAAR basis.
- Unit output of light vehicles in the US fell 5.70% to 885,000 units produced versus year ago levels.
- February 2007 North American light vehicle production fell 5.00% from year ago levels to 14.88 million units produced on a SAAR basis.
- Year-to-date North American production is down one million units versus last year on a SAAR basis.

CSM Automotive Production Barometer (US and NA SAAR, units in millions)



- Downtime continues as a significant factor in lower production results.
- Diminishing legacy costs via excess capacity and workers facilitating in driving Big 3 volume downward.
- Big 3 focus is on profitable quality volume versus quantity as in the past.
- Incremental output in North America by the New Domestics being eroded by declining Big 3 production.

Light Vehicle Production (units in millions)	Dec-06	Jan-07	Feb-07	YTD	2006	2005
US Total (SAAR)	10.87	9.95	10.41	10.18	10.86	11.57
Autos	4.18	3.86	3.63	3.74	4.14	4.26
Light Trucks	6.69	6.09	6.78	6.44	6.72	7.32
US (NSA)	0.75	0.83	0.89	1.71	10.86	11.57
North America (SAAR)	14.68	14.94	14.88	14.92	15.35	15.79

Light Vehicle Production (Y/Y %)	Dec-06	Jan-07	Feb-07	YTD	2006	2005
US Total (SAAR)	-1.50%	-12.30%	-6.10%	-9.10%	-6.10%	-0.60%
Autos	-2.10%	-13.30%	-14.70%	-14.00%	-2.60%	2.30%
Light Trucks	-1.10%	-11.60%	-0.60%	-6.00%	-8.20%	-2.20%
US (NSA)	-7.50%	-7.90%	-5.70%	-6.80%	-6.10%	-0.60%
North America (SAAR)	-7.60%	-7.70%	-5.00%	-6.30%	-2.80%	0.10%