

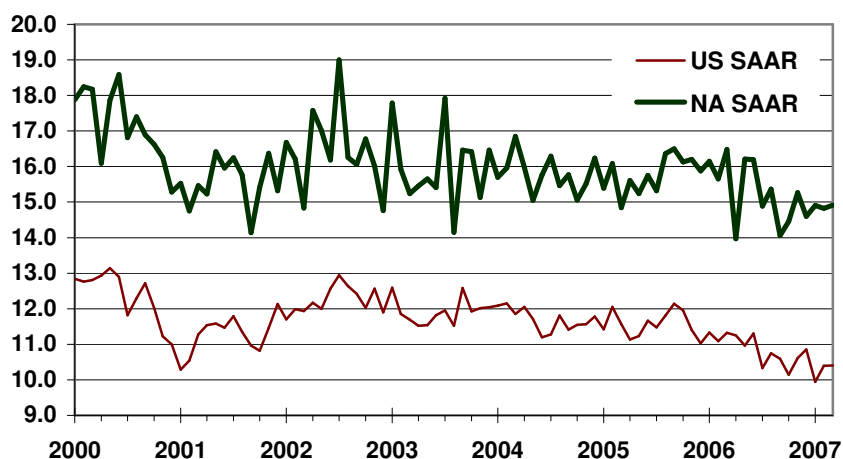


CSM Automotive Production Barometer (APB)

CSM Worldwide, the leading provider of market intelligence and forecasting to the automotive industry, announces the April 2007 CSM Automotive Production Barometer™. Released in advance of existing sources of information, this service provides an accurate record of light vehicle production for the previous month to assist automotive economists and financial analysts in their ongoing industry evaluations.

- US light vehicle production in March 2007 declined 8.10% over year ago levels to 10.40 million units on a SAAR basis.
- Unit output of light vehicles in the US fell 12.00% to one million units produced versus year ago levels.
- March 2007 North American light vehicle production fell a steep 9.50% from year ago levels to 14.89 million units produced on a SAAR basis.
- North American output through March is down over 1.2 million units versus last year on a SAAR basis.

CSM Automotive Production Barometer (US and NA SAAR, units in millions)



- Diminishing legacy costs via excess capacity and workers facilitating in driving Big 3 volume downward.
- Incentive spending creeping upwards as manufacturers aim to jump start tepid new vehicle demand.
- Strong new vehicle imports also adversely affecting local output.
- New and redesigned products and incremental production expected to increase local output in second half.

Light Vehicle Production (units in millions)	Jan-07	Feb-07	Mar-07	YTD	2006	2005
US Total (SAAR)	9.95	10.40	10.40	10.26	10.86	11.57
Autos	3.86	3.63	3.52	3.66	4.14	4.26
Light Trucks	6.09	6.77	6.88	6.60	6.72	7.32
US (NSA)	0.83	0.89	1.00	2.71	10.86	11.57
North America (SAAR)	14.90	14.82	14.91	14.89	15.35	15.79

Light Vehicle Production (Y/Y %)	Jan-07	Feb-07	Mar-07	YTD	2006	2005
US Total (SAAR)	-12.30%	-6.10%	-8.10%	-8.80%	-6.10%	-0.60%
Autos	-13.30%	-14.70%	-18.80%	-15.70%	-2.60%	2.30%
Light Trucks	-11.60%	-0.60%	-1.50%	-4.40%	-8.20%	-2.20%
US (NSA)	-7.90%	-5.70%	-12.00%	-8.80%	-6.10%	-0.60%
North America (SAAR)	-7.70%	-5.00%	-9.50%	-7.60%	-2.80%	0.10%