

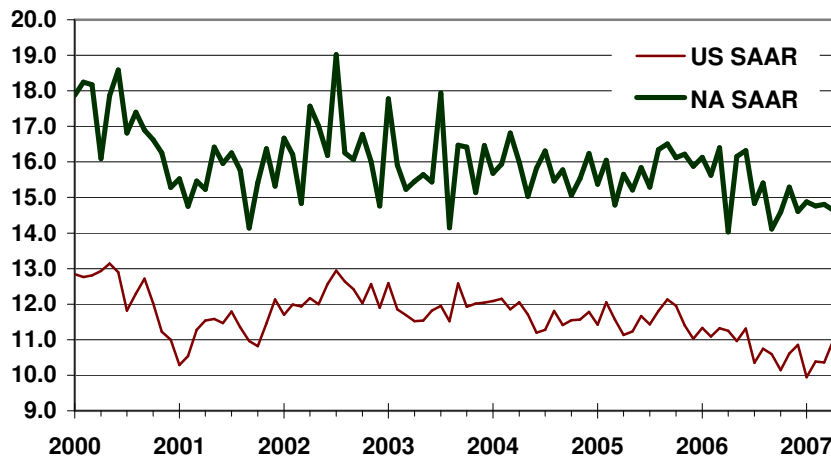


CSM Automotive Production Barometer (APB)

CSM Worldwide, the leading provider of market intelligence and forecasting to the automotive industry, announces the May 2007 CSM Automotive Production Barometer™. Released in advance of existing sources of information, this service provides an accurate record of light vehicle production for the previous month to assist automotive economists and financial analysts in their ongoing industry evaluations.

- US light vehicle production in April 2007 declined 2.60% over year ago levels to 10.95 million units on a SAAR basis.
- Conversely, unit output of light vehicles in the US increased 2.60% with over 900,000 million units produced versus year ago levels.
- April 2007 North American light vehicle production increased 4.40% from exceptionally weak year ago levels to 14.66 million units produced on a SAAR basis.
- Weakness continues with the past ten months performing under the twelve month moving average.

CSM Automotive Production Barometer (US and NA SAAR, units in millions)



- Diminishing legacy costs via excess capacity and workers facilitating in driving US 3 volume downward.
- Incentive spending creeping upwards as manufacturers aim to jump start tepid new vehicle demand.
- Strong new vehicle imports also adversely affecting local output.
- New and redesigned products and incremental production expected to boost local output in second half.

Light Vehicle Production (units in millions)	Feb-07	Mar-07	Apr-07	YTD	2006	2005
US Total (SAAR)	10.39	10.36	10.95	10.41	10.86	11.57
Autos	3.63	3.52	3.61	3.65	4.14	4.26
Light Trucks	6.76	6.84	7.34	6.76	6.72	7.32
US (NSA)	0.88	0.99	0.90	3.85	10.86	11.57
North America (SAAR)	14.76	14.81	14.66	14.78	15.36	15.79

Light Vehicle Production (Y/Y %)	Feb-07	Mar-07	Apr-07	YTD	2006	2005
US Total (SAAR)	-6.30%	-8.50%	-2.60%	-7.50%	-6.10%	-0.60%
Autos	-14.80%	-18.80%	-14.70%	-15.50%	-2.60%	2.30%
Light Trucks	-1.00%	-2.10%	4.60%	-2.40%	-8.20%	-2.20%
US (NSA)	-6.00%	-12.40%	2.60%	-6.30%	-6.10%	-0.60%
North America (SAAR)	-5.50%	-9.70%	4.40%	-5.00%	-2.70%	0.00%