

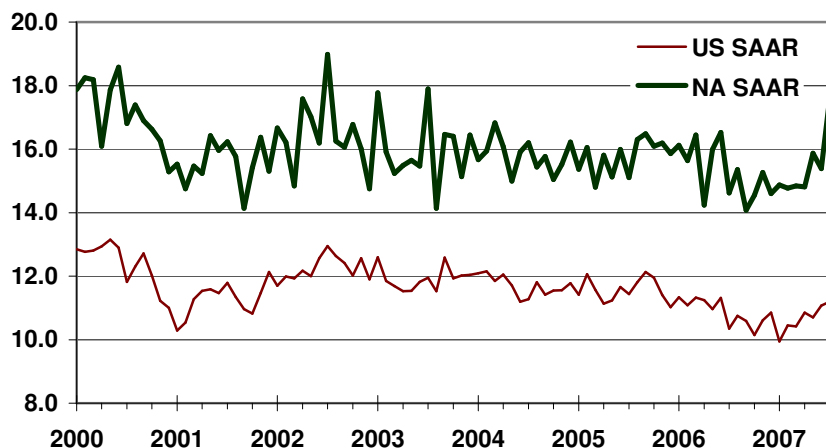


CSM Automotive Production Barometer (APB)

CSM Worldwide, the leading provider of market intelligence and forecasting to the automotive industry, announces the August 2007 CSM Automotive Production Barometer™. Released in advance of existing sources of information, this service provides an accurate record of light vehicle production for the previous month to assist automotive economists and financial analysts in their ongoing industry evaluations.

- US light vehicle production in July 2007 increased 8.20% over year ago levels to 11.20 million units on a SAAR basis.
- July 2007 North American light vehicle production increased 20.30% from year ago levels to 17.60 million units produced on a SAAR basis.
- Production continued at several plants during the traditional summer shutdown period in North America bolstered output to the high levels evidenced by the monthly SAAR.
- Production levels will moderate in August and continue to do so for the remainder of 2007.

CSM Automotive Production Barometer (US and NA SAAR, units in millions)



- Build rates are expected decline in the coming months and align to slower demand levels.
- Incentive spending continues an upward trend as manufacturers aim to jump start demand.
- Strong new vehicle imports adversely affecting local output.
- New and redesigned products and incremental production expected to boost local output in second half.

Light Vehicle Production (units in millions)	May-07	Jun-07	Jul-07	YTD	2006	2005
US Total (SAAR)	10.70	11.08	11.20	10.64	10.86	11.57
Autos	3.56	3.87	3.90	4.17	4.14	4.26
Light Trucks	7.14	7.21	7.30	6.97	6.72	7.32
US (NSA)	1.00	0.97	0.62	6.20	10.86	11.57
North America (SAAR)	15.87	15.39	17.60	15.33	15.36	15.79

Light Vehicle Production (Y/Y %)	May-07	Jun-07	Jul-07	YTD	2006	2005
US Total (SAAR)	-2.50%	-2.10%	8.20%	-4.50%	-6.10%	-0.60%
Autos	-12.70%	-1.40%	3.70%	-10.90%	-2.60%	2.30%
Light Trucks	3.60%	-2.50%	10.70%	-0.60%	-8.20%	-2.20%
US (NSA)	-2.40%	-6.40%	17.80%	-3.80%	-6.10%	-0.60%
North America (SAAR)	-1.10%	-7.90%	20.30%	2.50%	-2.70%	0.00%