

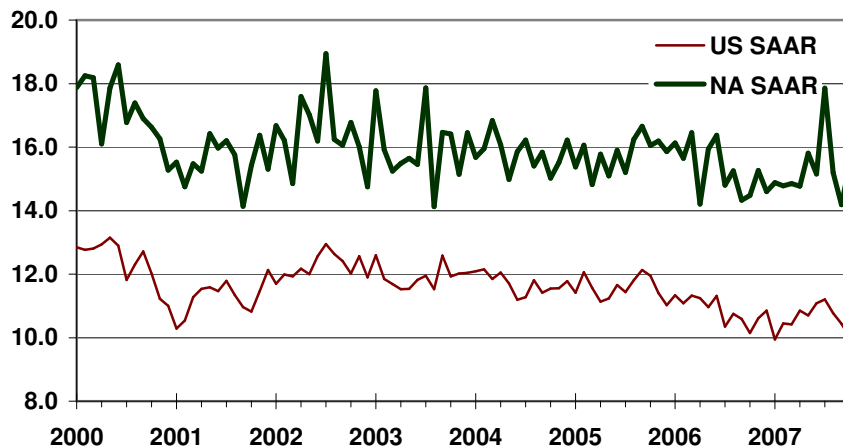


## CSM Automotive Production Barometer (APB)

CSM Worldwide, the leading provider of market intelligence and forecasting to the automotive industry, announces the November 2007 CSM Automotive Production Barometer™. Released in advance of existing sources of information, this service provides an accurate record of light vehicle production for the previous month to assist automotive economists and financial analysts in their ongoing industry evaluations.

- US light vehicle production in October 2007 fell 1.40% from year ago levels to 10.00 million units on a SAAR basis, the third lowest output in over 10 years.
- North American light vehicle production in October 2007 increased 7.0% over year ago levels to a resilient 15.49 million units produced on a SAAR basis.
- The year-over-year strength overstates the health of the production environment following massive production cuts late last year at Ford and Chrysler.
- Results indicate greater resilience, though output is expected to decline through the first half of 2008.

## CSM Automotive Production Barometer (US and NA SAAR, units in millions)



- Build rates are expected to be slightly stronger through the end of the year, but drop sharply in early 2008.
- Manufacturers are slowing incentive spending to preserve profitability levels despite demand weakness.
- Strong vehicle imports continue to adversely affect local output.
- Recent labor actions are aimed more towards reducing fixed costs than reducing overall output.

Light Vehicle Production (units in millions)	Aug-07	Sep-07	Oct-07	YTD	2006	2005
US Total (SAAR)	10.78	10.44	10.00	10.56	10.86	11.57
Autos	3.72	3.61	3.63	3.69	4.14	4.26
Light Trucks	7.05	6.82	6.37	6.87	6.72	7.32
US (NSA)	0.99	0.83	0.97	8.99	10.86	11.57
North America (SAAR)	15.20	14.19	15.49	15.20	15.36	15.79

Light Vehicle Production (Y/Y %)	Aug-07	Sep-07	Oct-07	YTD	2006	2005
US Total (SAAR)	0.13%	-1.50%	-1.40%	-3.30%	-6.10%	-0.60%
Autos	-9.00%	-14.00%	-13.20%	11.30%	-2.60%	2.30%
Light Trucks	5.90%	6.80%	6.90%	1.60%	-8.20%	-2.20%
US (NSA)	-1.20%	-6.30%	2.50%	-3.10%	-6.10%	-0.60%
North America (SAAR)	-0.40%	-1.10%	7.00%	-1.30%	-2.70%	0.00%