

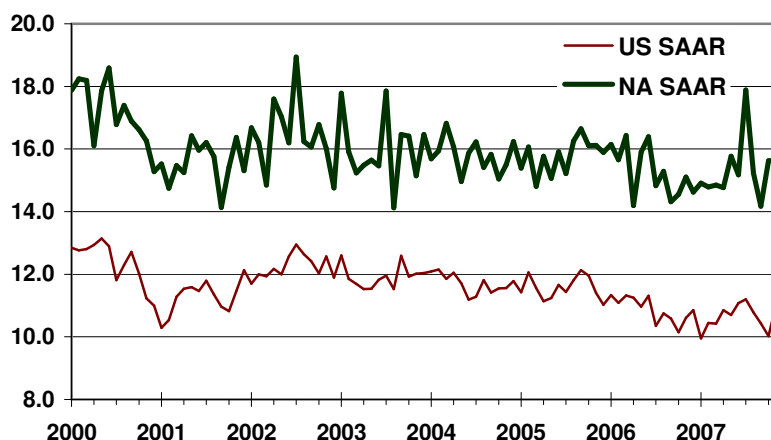


CSM Automotive Production Barometer (APB)

CSM Worldwide, the leading provider of market intelligence and forecasting to the automotive industry, announces the December 2007 CSM Automotive Production Barometer™. Released in advance of existing sources of information, this service provides an accurate record of light vehicle production for the previous month to assist automotive economists and financial analysts in their ongoing industry evaluations.

- US light vehicle production in November 2007 increased 3.80% from year ago levels to 11.01 million units on a SAAR basis.
- North American light vehicle production in November 2007 increased 3.5% over year ago levels to a resilient 15.63 million units produced on a SAAR basis.
- The year-over-year strength continues to overstate the health of the production environment following massive production cuts at Ford and Chrysler last year.
- Through recent gains indicate greater resilience, output will decline through the first half of 2008 based on weaker demand and structural reductions in output by the Detroit 3.

CSM Automotive Production Barometer (US and NA SAAR, units in millions)



- Despite gains, build rates will drop sharply in early 2008.
- Manufacturers continue to slow incentive activity to preserve profitability levels.
- Strong vehicle imports continue to adversely affect local output.
- Recent labor actions are aimed more towards reducing fixed costs than reducing total output.

Light Vehicle Production (units in millions)	Sep-07	Oct-07	Nov-07	YTD	2006	2005
US Total (SAAR)	10.44	10.02	11.01	10.60	10.86	11.57
Autos	3.61	3.63	3.95	3.72	4.14	4.26
Light Trucks	6.82	6.39	7.06	6.89	6.72	7.32
US (NSA)	0.83	0.97	0.87	9.87	10.86	11.57
North America (SAAR)	14.17	15.62	15.63	15.25	15.36	15.79

Light Vehicle Production (Y/Y %)	Sep-07	Oct-07	Nov-07	YTD	2006	2005
US Total (SAAR)	-1.40%	-1.20%	3.80%	-2.70%	-6.10%	-0.60%
Autos	-14.20%	-13.20%	-2.90%	-10.60%	-2.60%	2.30%
Light Trucks	7.10%	7.20%	8.00%	2.10%	-8.20%	-2.20%
US (NSA)	-6.20%	2.80%	4.20%	-2.50%	-6.10%	-0.60%
North America (SAAR)	-1.00%	7.40%	3.50%	-0.80%	-2.70%	0.00%