

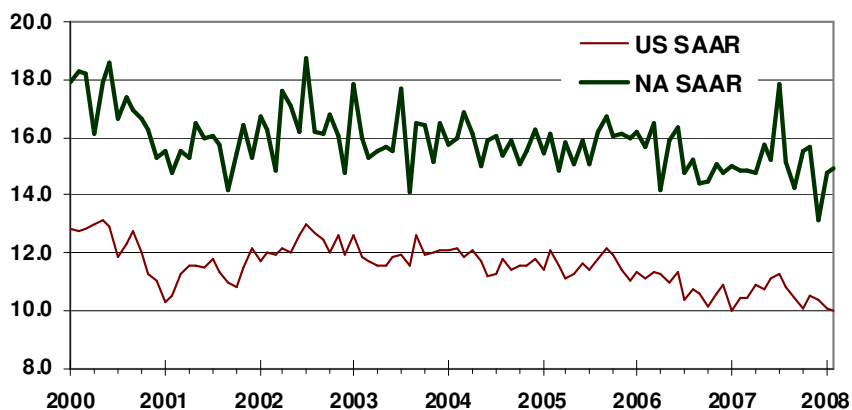


CSM Automotive Production Barometer (APB)

CSM Worldwide, the leading provider of market intelligence and forecasting to the automotive industry, announces the March 2008 CSM Automotive Production Barometer™. Released in advance of existing sources of information, this service provides an accurate record of light vehicle production for the previous month to assist automotive economists and financial analysts in their ongoing industry evaluations.

- US light vehicle production fell 4.6% in February 2008 from year ago levels to 10.01 million units on a SAAR basis, the third lowest output rate in 11 years.
- North American light vehicle production in February 2008 increased just 0.70% from year ago levels to 14.94 million units produced on a SAAR basis.
- Though isolated to GM, the continuing UAW-American Axle & Manufacturing strike will have a profound effect on March output levels with the lowest SAAR rate in 11 years expected.
- Economic and structural uncertainty continues to weigh on the auto sector with further declines expected in the coming months.

CSM Automotive Production Barometer (US and NA SAAR, units in millions)



- Build rates are expected to continue to slide through the first half of 2008.
- Demand weakness is affecting all manufacturers on some level.
- Strong vehicle imports continue to adversely affect local output.
- Exports are expected to continue to bolster regional output in 2008.

Light Vehicle Production (units in millions)	Dec-07	Jan-08	Feb-08	YTD	2007	2006
US Total (SAAR)	10.35	10.04	9.97	10.01	10.54	10.86
Autos	3.86	3.76	3.67	3.71	3.71	4.14
Light Trucks	6.48	6.28	6.31	6.29	6.84	6.72
US (NSA)	0.67	0.67	0.67	1.71	10.54	10.86
North America (SAAR)	13.10	14.75	14.94	14.85	15.10	15.36

Light Vehicle Production (Y/Y %)	Dec-07	Jan-08	Feb-08	YTD	2007	2006
US Total (SAAR)	-4.70%	0.90%	-4.60%	-2.00%	-2.90%	-6.10%
Autos	-7.50%	-2.50%	-0.60%	-1.60%	-10.50%	-2.60%
Light Trucks	-2.90%	3.10%	-6.80%	-2.20%	1.80%	-8.20%
US (NSA)	-9.60%	-0.50%	0.40%	0.00%	-2.90%	-6.10%
North America (SAAR)	-11.40%	-1.40%	0.70%	-0.40%	-1.80%	-2.70%